

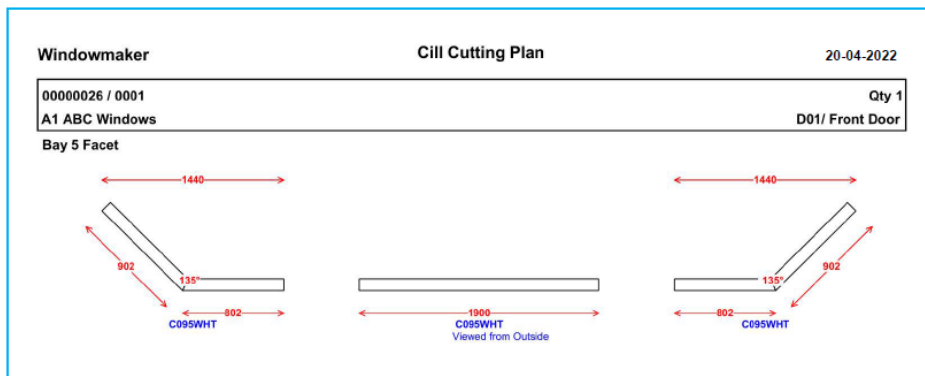
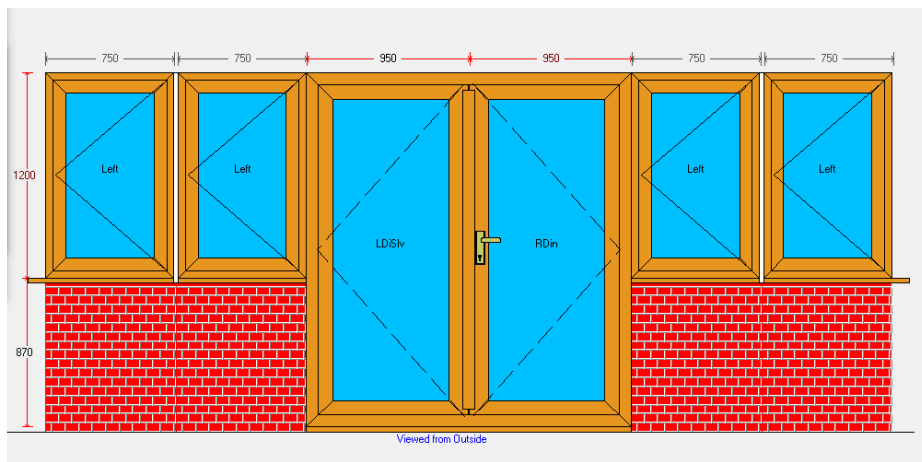
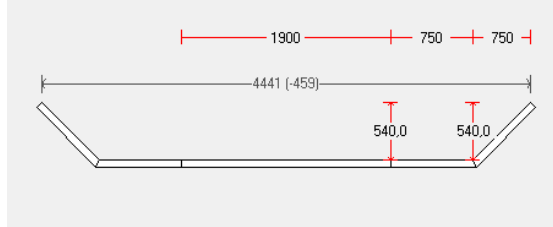
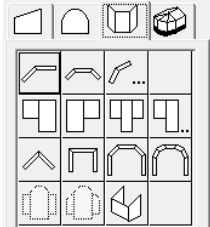
# Windowmaker Option

## Bays & Bows



### Overview: What is it about?

The Bays & Bows option allows you to design flag windows/doors, Bay and bow windows/doors and with different number of facets at required angles and of desired height.



### Benefits and Features: Why use this option?

- ▲ Ease of Configuration
  - Specify upto 12 facets
  - Supports asymmetric designs
  - Width and heights of facets and flags easily changeable
  - Bay angles can be easily modified
- ▲ Time saving
  - Select the required shape and specify the parameters (angles and dimensions)
- ▲ Simpler calculations - costs and BoM are generated automatically
- ▲ Availability of Production report/Cill cutting plan report for single as well as multi-facet frames